

Jameco Part number 105881

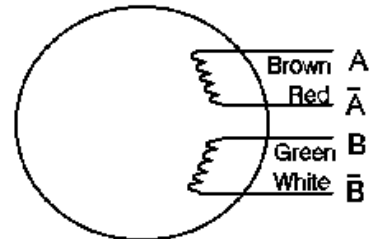
**JAMECO**  
ELECTRONIC COMPONENTS  
COMPUTER PRODUCTS

Part No. 105881  
Product No. SM4203  
2 Phase Bipolar Stepper Motor

1355 Shoreway Rd., Belmont, CA 94002 \* Tel: 415-592-8097 \* Fax: 415-592-2503 \* BBS: 415-637-9025

Specifications:

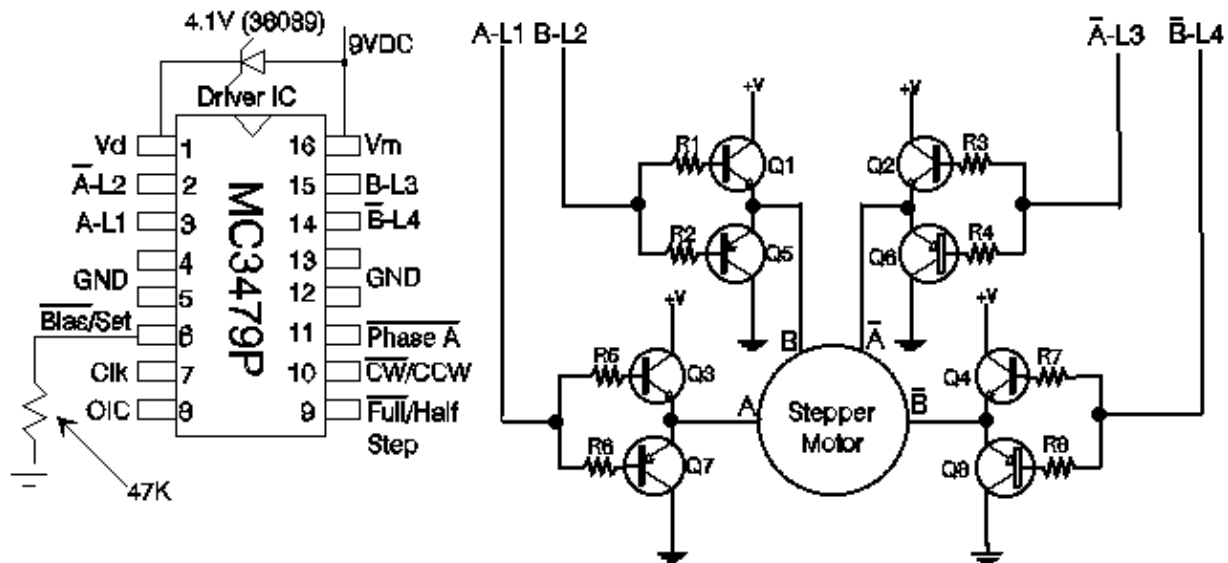
Bipolar (2 Phase)  
12VDC, 480mA  
Coll: 25 Ohm  
3.6 degrees/step  
Shaft: 0.19"D x 0.43"L  
Mounting Hole Spacing: 1.73"  
Mounting Hole Diameter: 0.11"  
Motor: 1.66"D x 1.38"H  
Detent Torque: 80 g-cm  
Holding Torque: 600 g-cm  
Weight: 0.5 lbs.



Applications:

Automation  
Robotic Control  
Precision Mechanical Control

Step	A	B	A-bar	B-bar
1	+	+	-	-
2	-	+	+	-
3	-	-	+	+
4	+	-	-	+
5	+	+	-	-



Q1-Q4 = MJE3055T (25857)

R1-R8 = 1K (29663)

Q5-Q8 = MJE2955T (25831)

Driver IC - MC3479P (25216)